

Roots that strengthen.

Branches that Reach.

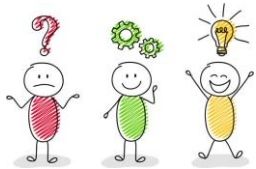
Fruit that flourishes.



Summer 2 Newsletter

It has been another roller coaster of a year. Our Autumn term was about trying to find our feet and rhythm after a COVID-disrupted 18 months. Spring brought fresh hopes of returning to normal, only to be hit by another wave of COVID illness across the school and the tragic death of Mrs Menzel. As we came through those tough times, we were faced with the hurdle of staff moving on to new and exciting pastures, bringing with it, for some, an uncertainty of what was next.

But it was Thomas Aquinas who said that 'if the highest aim of a captain were to preserve his ship, he would keep it in port forever'. Change and challenge is hard. This is why we place so much emphasis on delivering a curriculum, events, activities and a general ethos that give the children the opportunity to build resilience in their lives. But it starts with us, as adults, modelling that resilience to our children because, if we wrap them in cotton wool, we are only making their ability to cope with the knocks and uncertainties in their future that much more difficult.



We learn from our mistakes. We learn from finding things hard. We grow as a person if we overcome adversity and difficulties in our work and play. And it makes the success we have all the more impressive.

Not only have we seen some brilliant individual academic achievements this year, but the children's collective results are also the best we have ever had as a school, have made us the highest performing Eynsham Partnership Academy School and we are above the national average in all subjects! Wow! Your trust in us has been rewarded!



You've heard me say it before, but it is not just about the academic for us at Standlake. It is about developing the child as a whole, not just one who can read, write and add numbers. We pride ourselves on the character development of the extra-curricular activities and the next couple of pages show some of our best bits!

None of this would have happened without the tireless dedication of the staff, all of whom go above and beyond what is expected and written in their job description. They do it because they care deeply about your children and always, always want to do the best by them. It is an absolute pleasure and a joy to work with this incredible Standlake Team.



Finally, thank you for the encouragement and support you have given us over the last year. It makes all the difference.

Have a lovely summer holiday and we look forward to making it even better for your children next year!

Andrew Denham

Our Values: Courage Love Forgiveness Compassion Tolerance Thankfulness Honesty

Roots that strengthen.

Branches that Reach.

Fruit that flourishes.

Awesome Achievement

Below are the percentages for the number of children who achieved age related expectations (ARE) in each of the subjects.

Year 6 SATS (based on tests alone):

	Standlake 2019	Standlake 2022	National Average 2022
Reading	69%	100%	74%
Writing	75%	80%	69%
Mathematics	81%	90%	71%
SPAG	69%	90%	72%
Combined	56%	80%	59%

Notes:

- 'SPAG' refers to the Spelling, Punctuation and Grammar Test
- 'Combined' data refers to the number children who got ARE in Reading, Writing & Maths
- There were no tests in 2020 or 2021 due to the COVID pandemic

Year 2 Teacher Assessments (informed by SATs tests)

	Standlake 2019	Standlake 2022	National Average 2019
Reading	64%	87%	75%
Writing	50%	80%	69%
Mathematics	71%	86%	76%
Combined	50%	80%	65%

Notes:

- The National Average for Year 2 results will be released in the autumn term, but using the 2019 data is a good indication of how we are likely to have done comparatively
- 'Combined' data refers to the number children who got ARE in Reading, Writing & Maths
- There were no tests in 2020 or 2021 due to the COVID pandemic

Year One Phonics Screening Test

Year	Standlake 2019	Standlake 2022	National Average 2019
% Pass	90%	92%	82%

Notes:

- The test looks at how many words (out of 40) the children can read using their phonic knowledge. They needed to score 32 or more to pass
- The National Average for Year 1 results will be released in the autumn term but using the 2019 data is a good indication of how we are likely to have done comparatively

Early Years Foundation Stage (Reception)

Year	Standlake 2019	Standlake 2022	National Average 2019
% GLD	76%	77%	72%

Notes:

- GLD refers to Good Level of Develop. The percentage reflect the number of children who finished Reception at age related expectation
- The National Average for the Reception results will be released in the autumn term but using the 2019 data is a good indication of how we are likely to have done comparatively

Our Values: Courage Love Forgiveness Compassion Tolerance Thankfulness Honesty

Roots that strengthen.

Branches that Reach.

Fruit that flourishes.

ATTENDANCE

Please take time to read this important page!

Outlined below is the trend in whole school attendance over the last few years. *The 2019/20 and 2020/21 percentages are for when children were meant to be in school when there wasn't a national lockdown.*

	2016/17	2017/18	2018/19	2019/20	2020/21	2021/22
All	96.5	96.8	97.0	96.7	97.8%	94.9%

The percentage for this year is the lowest it has ever been. We have also seen an increase in children falling below 95% and, more worryingly, an increase in the number of children going below 90%.

This has been partly due to children being off with COVID and a nasty winter bug that went through the school. However, it is also due to an increasing number of parents taking holiday during term time or other unauthorised absences. Please do not put your child in the uncomfortable position where you are expecting them to lie to their class teacher about why they weren't in school. They tend to tell us the truth anyway and it is not setting them a good example! **We have also seen an increase in parents keeping their children off school for 'just in case' scenarios or 'to be on the safe side'.** These are all parent actions that significantly disrupt their child's education and the teacher's ability to deliver a consistent education to them.

There is new national guidance on attendance for local authorities and schools. **This is a pre-warning to all parents that the Eynsham Partnership Academy will be tightening its response to dealing with parents who take their children out of school without authorisation.** It is likely that those parents who are persistent offenders may well receive one of the following:

Parenting Contract

This will be a formal written agreement between you and the school to address irregular attendance. It is intended to provide support and offer an alternative to prosecution, if followed.

Education Supervision Order

If the council thinks you need support getting your child to go to school but you're not co-operating, they can apply to a court for an Education Supervision Order. A supervisor will be appointed to help you get your child into education. The local council can do this instead of prosecuting you, or as well.

Fixed Penalty Notice

Our local council can give each parent a fine of £60, which rises to £120 each if you do not pay within 21 days. If you do not pay the fine after 28 days, you may be prosecuted for your child's absence from school.

Prosecution

You could get a fine of up to £2,500, a community order or a jail sentence up to 3 months. The court also gives you a Parenting Order.

Please look at your child's school report to see what their attendance was this year. Attendance above 96% is good. Those with attendance between 91-95% is a concern because this is the equivalent of missing half a day every fortnight. Children with attendance at 90% and below is considered 'persistent absence', the equivalent of half a day away from school every week.

The Governors and school leadership will continue to closely track individual pupils who fell below 95% this year or start to do so next year and consider the actions available to them.

Please do not book a holiday during term time or think it is OK to take them out at lunchtime ready for a long weekend. If we choose to pursue a fixed penalty (£60 per parent, per day) you may find it is more costly than you first thought!

We hope this page has given you sufficient warning to a more robust attendance approach that will be adopting next year.

Our Values: Courage Love Forgiveness Compassion Tolerance Thankfulness Honesty

Roots that strengthen.

Branches that Reach.

Fruit that flourishes.

2021-2022 IN PICTURES...

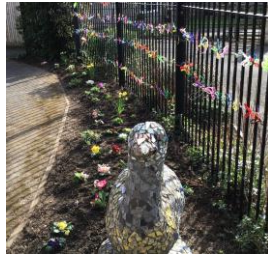


Our Values: **Courage** **Love** **Forgiveness** **Compassion** **Tolerance** **Thankfulness** **Honesty**

Roots that strengthen.



Branches that Reach.



Fruit that flourishes.



Our Values: **Courage** **Love** **Forgiveness** **Compassion** **Tolerance** **Thankfulness** **Honesty**

Roots that strengthen.



Branches that Reach.



Fruit that flourishes.



Our Values: **Courage** **Love** **Forgiveness** **Compassion** **Tolerance** **Thankfulness** **Honesty**

Roots that strengthen.



Branches that Reach.



Fruit that flourishes.



Good Bye & Good Luck Year 6



First Day of Next Term: **Monday 5th September**

School will finish at 3.15pm

From September 2022, we will be finishing the school day at 3.15pm every day. This is to bring us in line with the government statutory requirements that the children are in school for 32.5 hours a week.

Our Values: Courage Love Forgiveness Compassion Tolerance Thankfulness Honesty

Roots that strengthen.

Branches that Reach.

Fruit that flourishes.

A MESSAGE FROM THE GOVERNORS

We would like to extend our heartfelt thanks to the staff for all their hard work this year and making it so successful for the children. Staff and children have worked so hard, and this is reflected in the marvellous achievements of the children in their academic work and extra-curricular activities.

As governors, we have played an active role in supporting, monitoring and holding school leaders to account with the strategic direction of the school.

During the year, the governors have monitored the refinement of the curriculum across the whole school so that there is comprehensive and thorough progression of learning in every subject.

A new programme, Read Write Inc, has been introduced, to inspire reading and cultivate a high standard of written work. Governors are monitoring the impact of this programme given the significant time and financial investment put into it.

Staff, pupil and parent questionnaires have been completed and analysed. We are delighted with how positive the feedback was. The governors have been actively engaged in scrutinising all the questionnaires, celebrating what is good and following up with school leaders about any issues raised.

The governors have also been actively involved in monitoring the delivery of the Standard Assessment Tests (SATs) for Key Stage 1 and Key Stage 2 children, the results of which were received last week, and were the best results across the board that the school has ever achieved and made Standlake the highest performing school in the EPA.

Governors were invited to talk to a sample of children from each year group and scrutinise their books. We were enormously impressed by the presentation and quality of their work, and the children's ability to discuss their work, and their understanding of the development of their learning.

We would like to extend our thanks and gratitude to all of the Standlake School Community for their ongoing encouragement and support for what the school is doing.

Have a lovely summer.

The Standlake Governors



Our Values: **Courage** **Love** **Forgiveness** **Compassion** **Tolerance** **Thankfulness** **Honesty**

Roots that strengthen.

Branches that Reach.

Fruit that flourishes.

Autumn 2021



Summer 2022



Have a great



Our Values: Courage Love Forgiveness Compassion Tolerance Thankfulness Honesty